

KOMATSU

PC170LC-11

EU Stage IV Engine

HYDRAULIC EXCAVATOR

PRELIMINARY



PC170LC-11

ENGINE POWER

90 kW / 121 HP @ 2.100 rpm

OPERATING WEIGHT

17.900 - 19.100 kg

BUCKET CAPACITY

max. 0,94 m³

Walk-Around

INCREASED PRODUCTIVITY AND ENVIRONMENTAL PERFORMANCE

Up to 6% higher productivity

Powerful and Environmentally Friendly

- NEW** • EU Stage IV engine
- NEW** • Adjustable idle shutdown
- Komatsu fuel-saving technology
- Engine fan clutch
- Reduced wastage

First-Class Comfort

- Fully air-suspended operator station
- NEW** • KomVision surround bird eye view (option)
- NEW** • Widescreen monitor with evolutionary interface
- Low noise levels
- Improved operator convenience



images may display optional equipment or specifications not available in your area.

PC170LCG-11

Maximized Efficiency

- Built-in versatility and superior productivity
- Enhanced engine management
- Lower hydraulic pressure loss

NEW

Safety First

- Komatsu SpaceCab™
- Improved monitoring system
- Neutral position detection system
- Safe access, easy maintenance
- Falling Object Protection System (FOPS) optional

NEW

NEW

Quality You Can Rely On

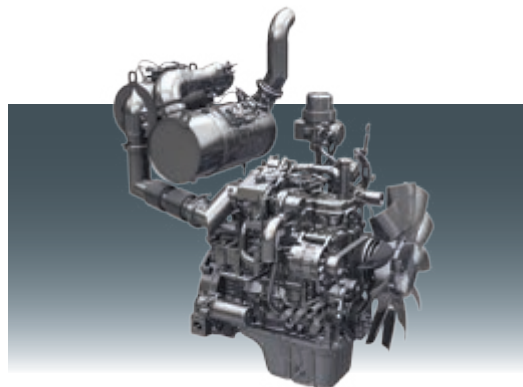
- Komatsu-quality components
- Extensive dealer support network
- Reliable and efficient

KOMTRAX™

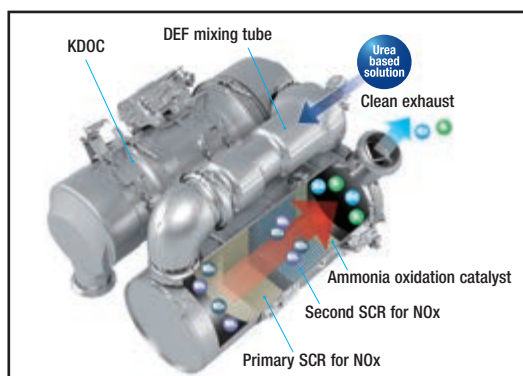
- Komatsu Wireless Monitoring System
- 3G mobile communications
- Integrated antenna
- Increased operational data and fuel savings

NEW

NEW



New, low consumption Komatsu SAA4D107E-3 engine.



The new heavy-duty aftertreatment system combines a Komatsu Diesel Oxidation Catalyst (KDOC) and SCR.



Fully air-suspended operator station ensures maximum operator comfort.



Improved monitoring system with rear-view camera image on the default screen. Eco gauge, eco guidance and fuel consumption gauge help to further reduce consumption.

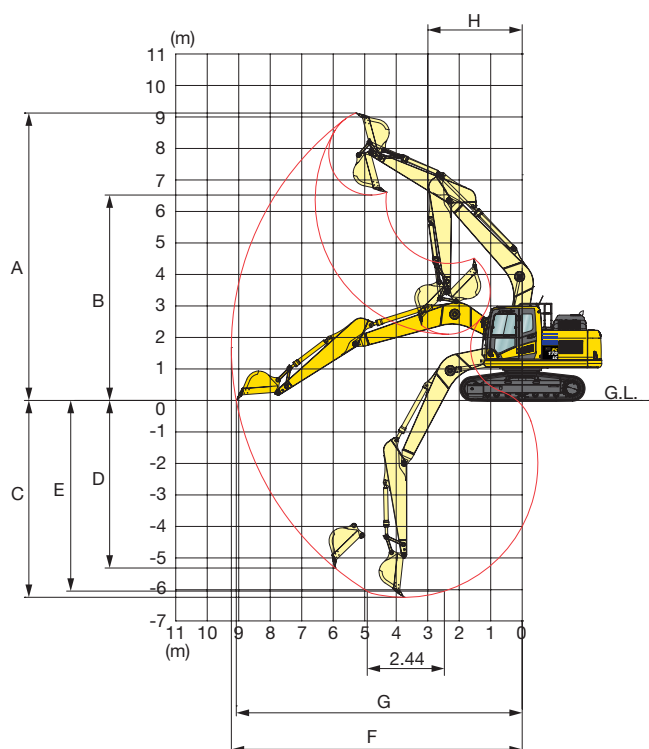


Complimentary maintenance program for customers

ENGINE

Model	Komatsu SAA4D107E-3
Type	Common rail direct injection, water-cooled, emissionised, turbocharged, after-cooled diesel
Engine power	
at rated engine speed	2.100 rpm
ISO 14396	90 kW/121 HP
ISO 9249 (net engine power)	90 kW/121 HP
No. of cylinders	4
Bore × stroke	107 × 124 mm
Displacement	4,46 l

WORKING RANGE



HYDRAULIC SYSTEM

Type	HydraMind. Closed-centre system with load sensing and pressure compensation valves
Additional circuits	2 additional circuits with proportional control can be installed
Main pump	1 variable displacement piston pump supplying boom, arm, bucket, swing and travel circuits
Maximum pump flow	298 l/min
Relief valve settings	
Implement	380 kg/cm ²
Travel	380 kg/cm ²
Swing	295 kg/cm ²
Pilot circuit	33 kg/cm ²

UNDERCARRIAGE

Construction	X-frame centre section with box section track frames
Track assembly	
Type	Fully sealed
Shoes (each side)	44
Tension	Combined spring and hydraulic unit
Rollers	
Track rollers (each side)	7
Carrier rollers (each side)	2

ENVIRONMENT

Engine emissions	Fully complies with EU Stage IV exhaust emission regulations
Noise levels	
L _{wA} external	99 dB(A) (2000/14/EC Stage II)
L _{pA} operator ear	68 dB(A) (ISO 6396 dynamic test)
Vibration levels (EN 12096:1997)*	
Hand/arm	≤ 2,5 m/s ² (uncertainty K = 0,48 m/s ²)
Body	≤ 0,5 m/s ² (uncertainty K = 0,23 m/s ²)

* For the purpose of risk assessment under directive 2002/44/EC, please refer to ISO/TR 25398:2006.

ARM LENGTH

	2,25 m	2,6 m	2,9 m
A Max. digging height	8.910 mm	8.980 mm	9.130 mm
B Max. dumping height	6.280 mm	6.370 mm	6.525 mm
C Max. digging depth	5.610 mm	5.960 mm	6.250 mm
D Max. vertical wall digging depth	4.860 mm	5.040 mm	5.320 mm
E Max. digging depth of cut for 2,44 m level	5.375 mm	5.740 mm	6.050 mm
F Max. digging reach	8.680 mm	8.960 mm	9.235 mm
G Max. digging reach at ground level	8.510 mm	8.800 mm	9.075 mm
H Min. swing radius	3.040 mm	2.990 mm	2.995 mm